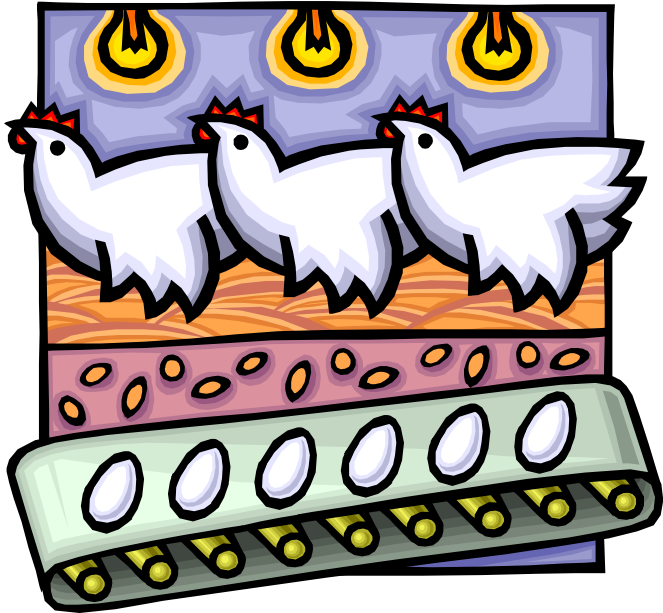


nóng chǎng dòng wù

农场动物

A Chinese Leveled Reading Book 1



© www.Chinese4kids.net
All rights reserved.

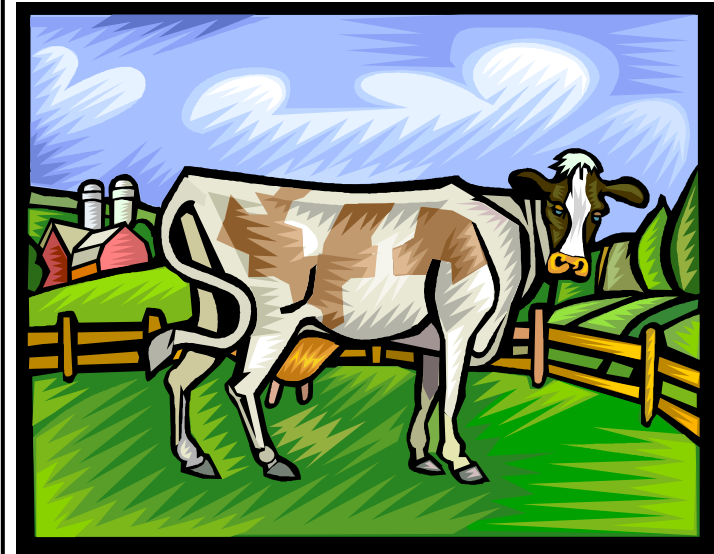


Visit www.Chinese4kids.net
For more resources for
learning Chinese

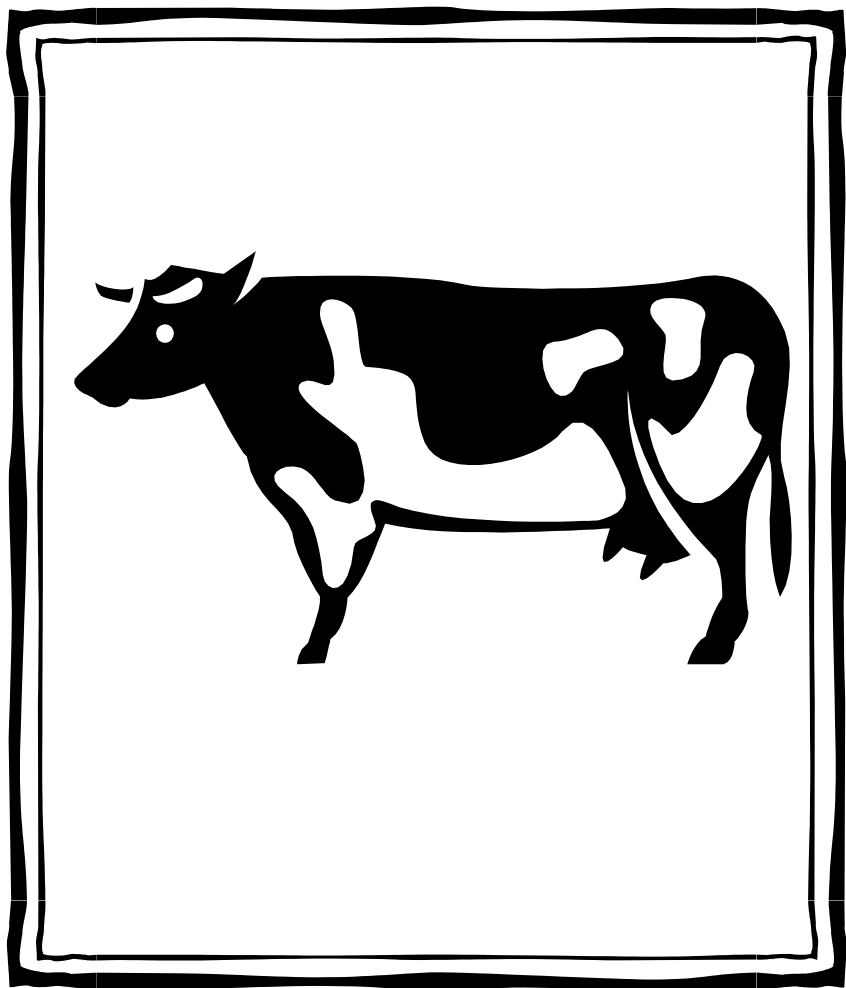
Chinese Leveled Reading 1

nóng chǎng dòng wù

农场动物



Written by: Sophia Xiong
www.chinese4kids.net



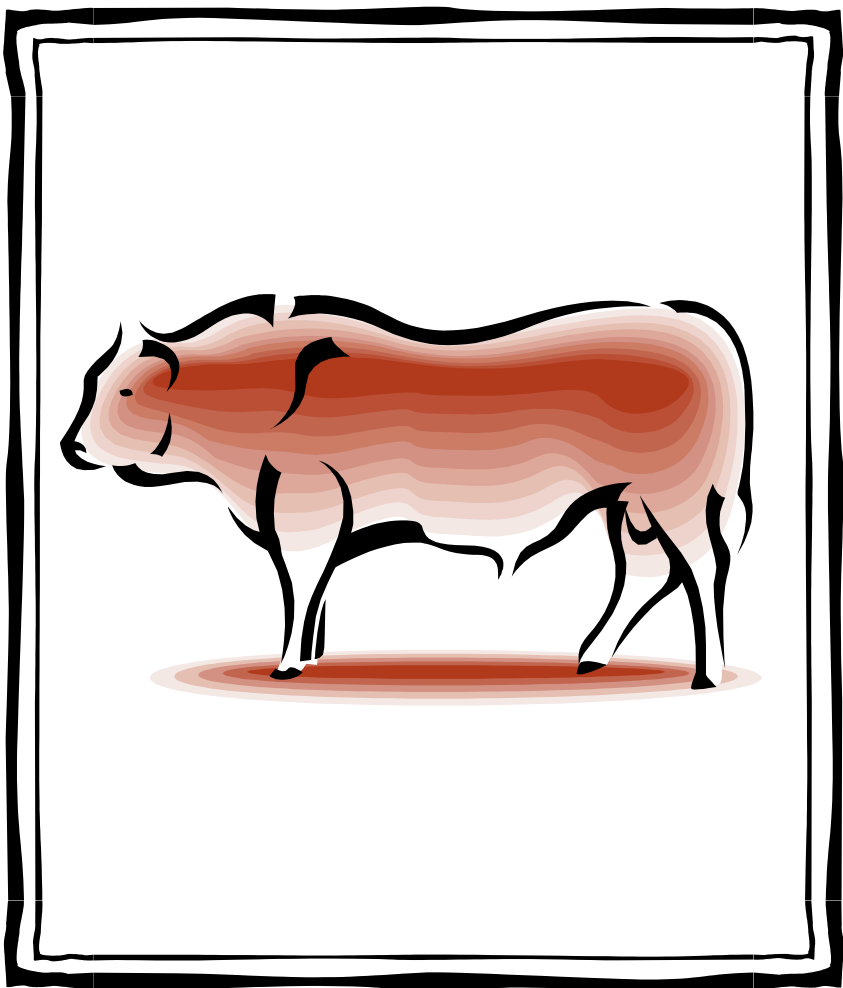
nǎi niú

奶牛



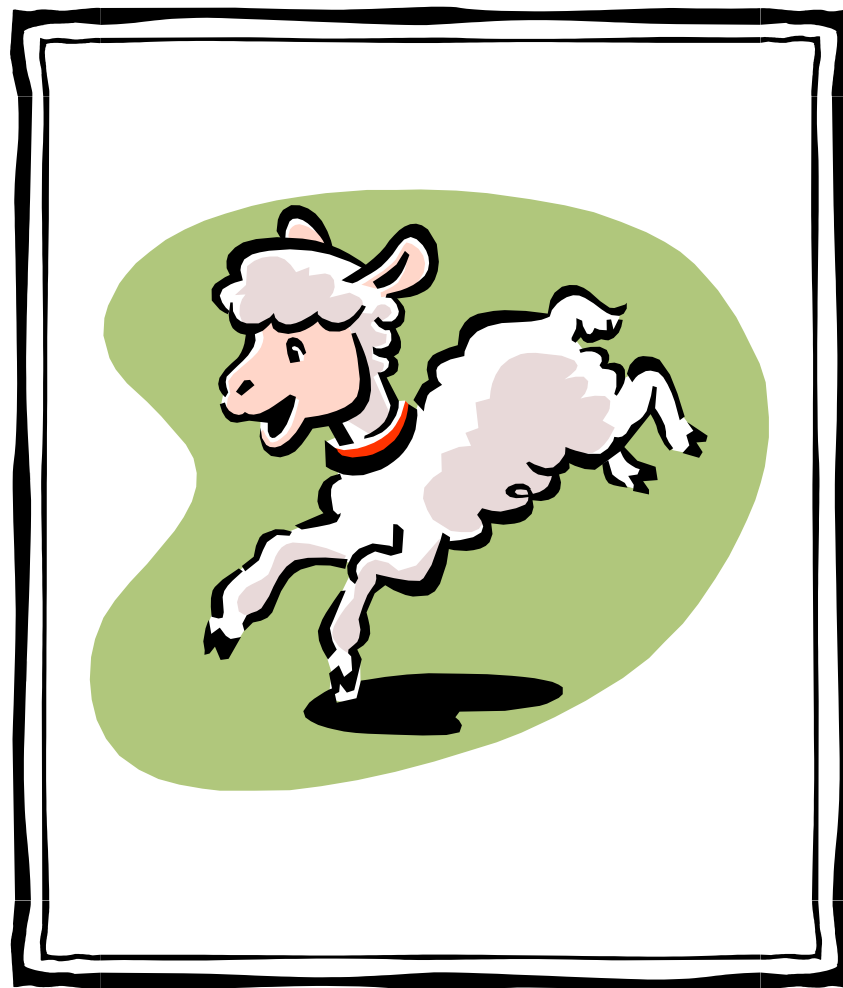
bā yuè

狗



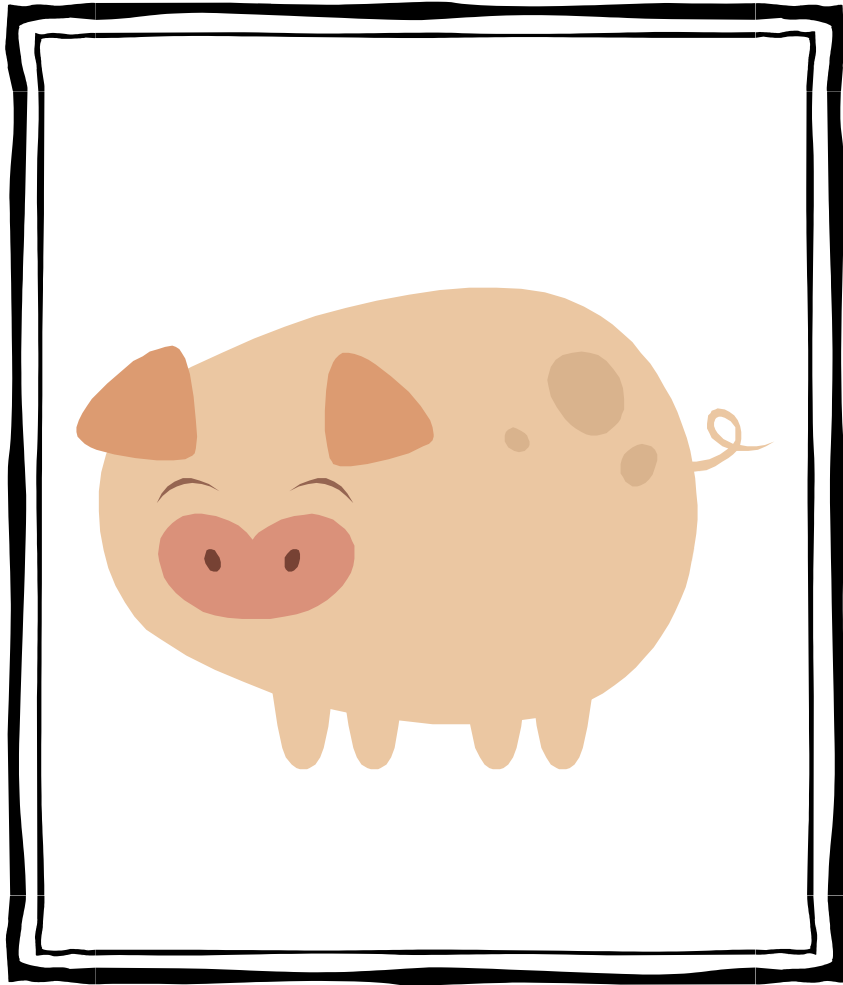
bā yuè

牛



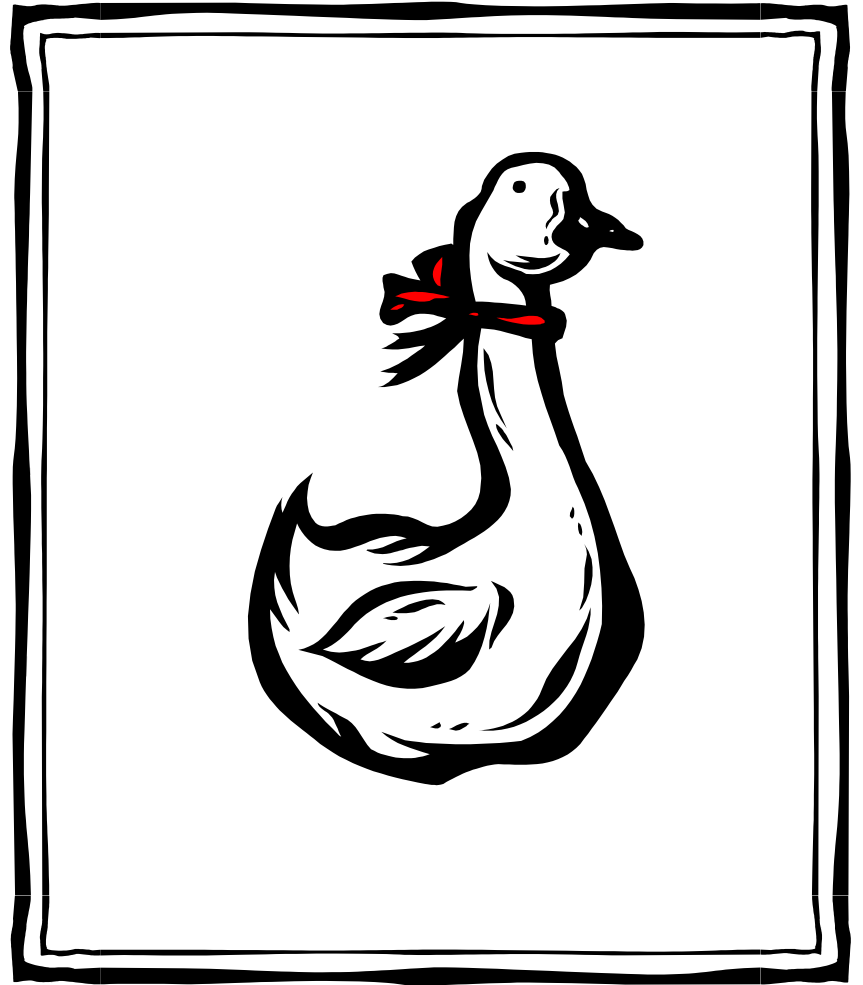
mián yáng

绵羊



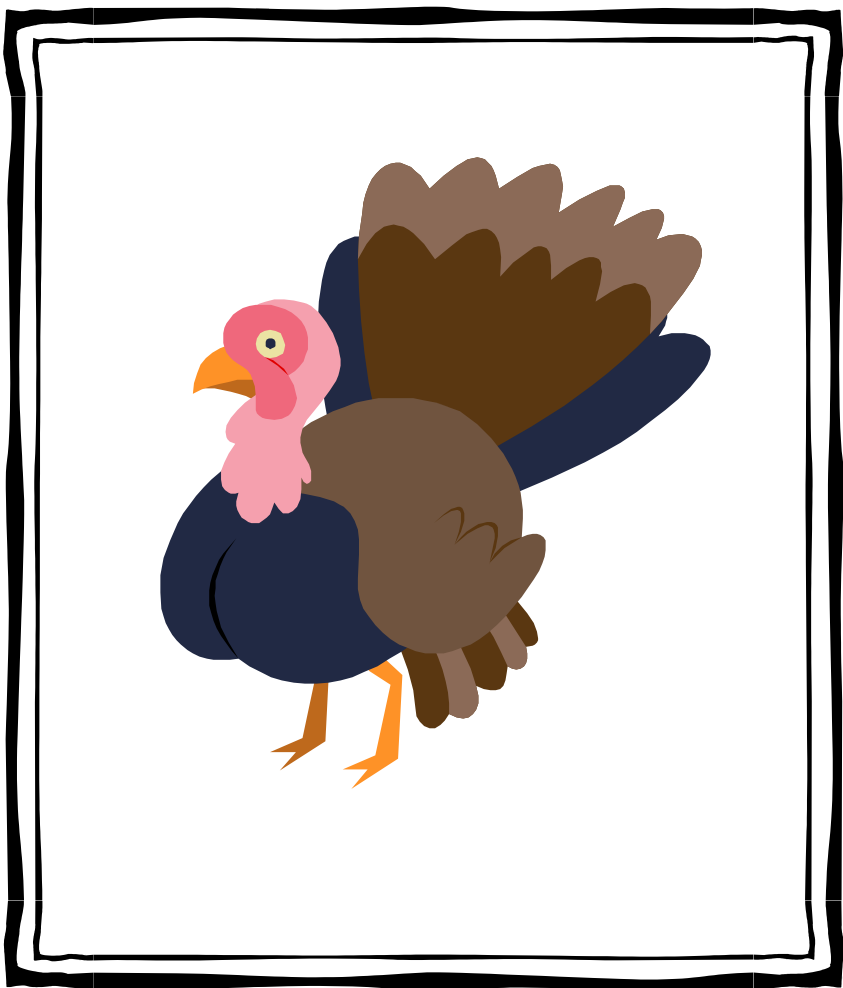
zhū

猪



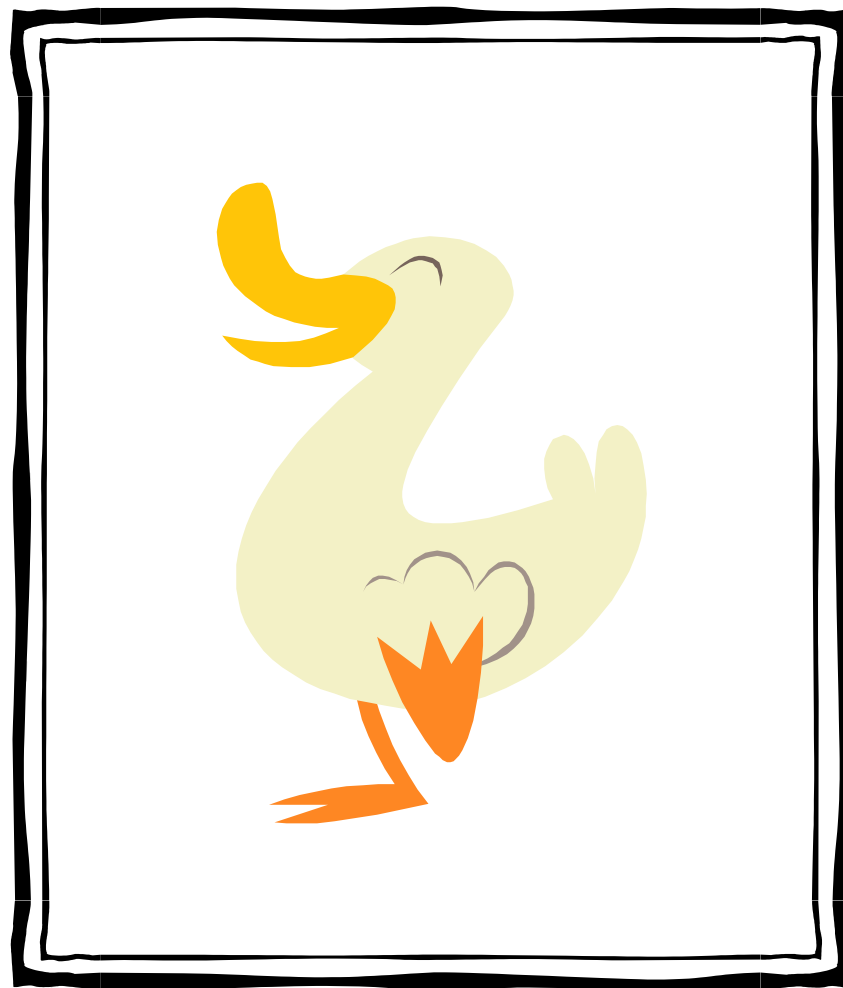
é

鹅



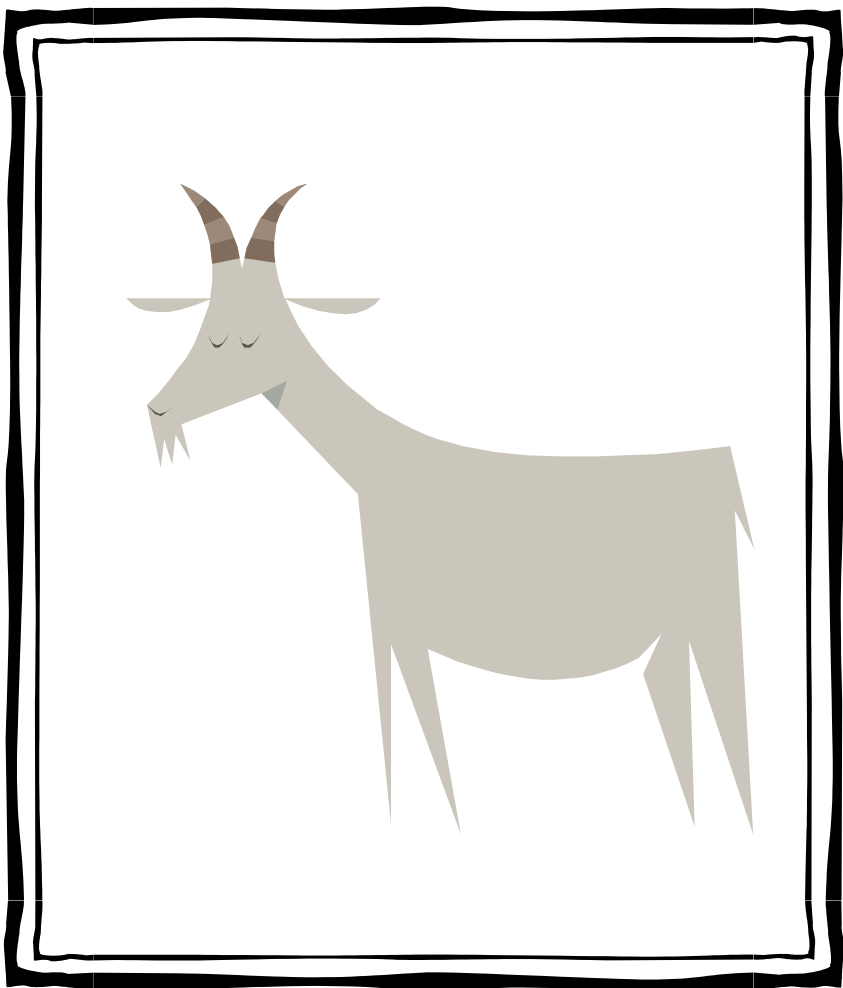
huǒ jī

火鸡



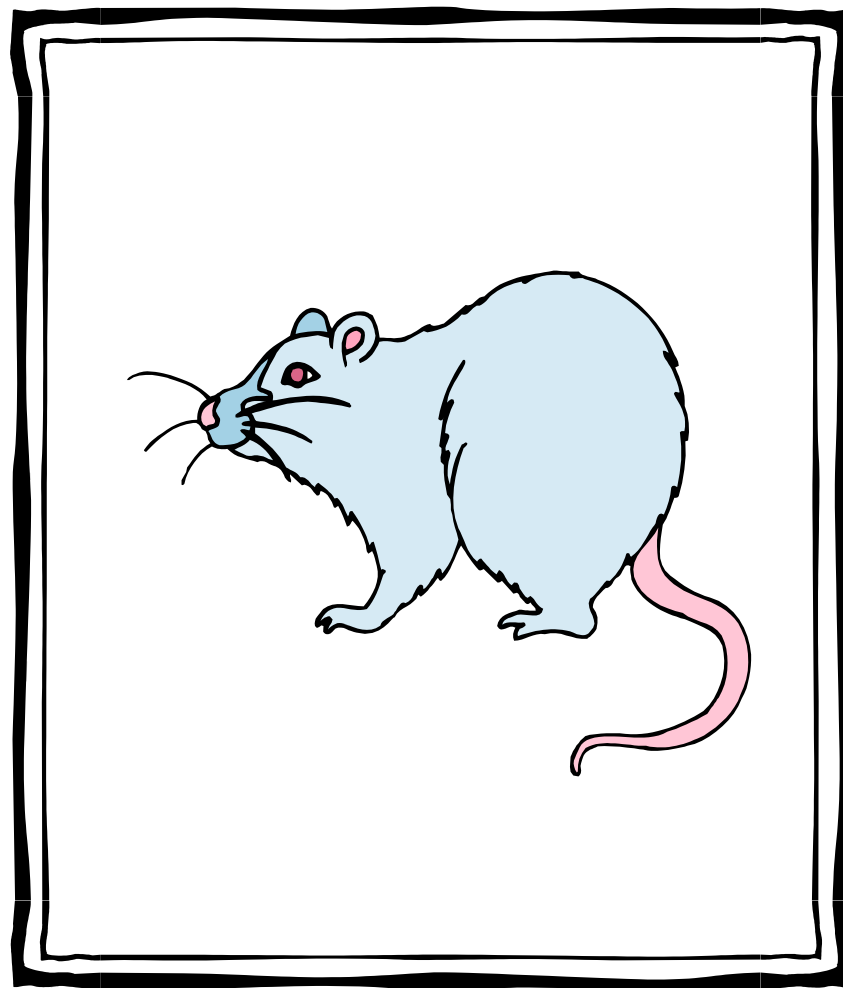
yā

鸭



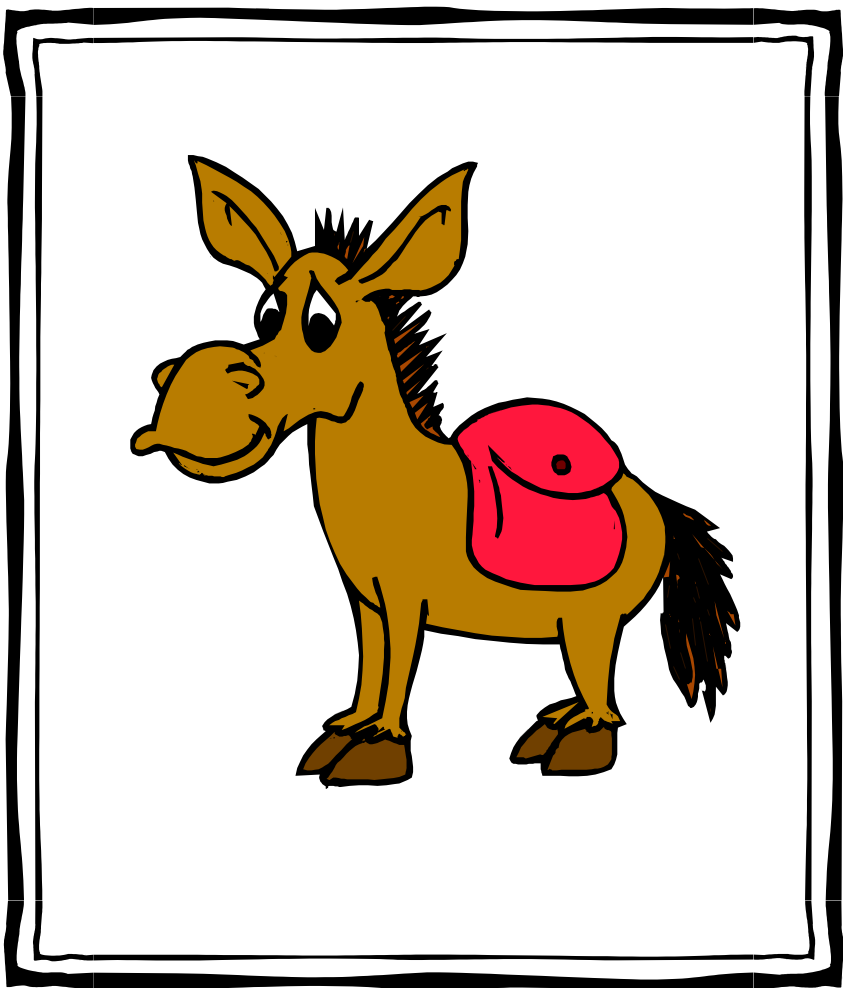
shān yáng

山羊



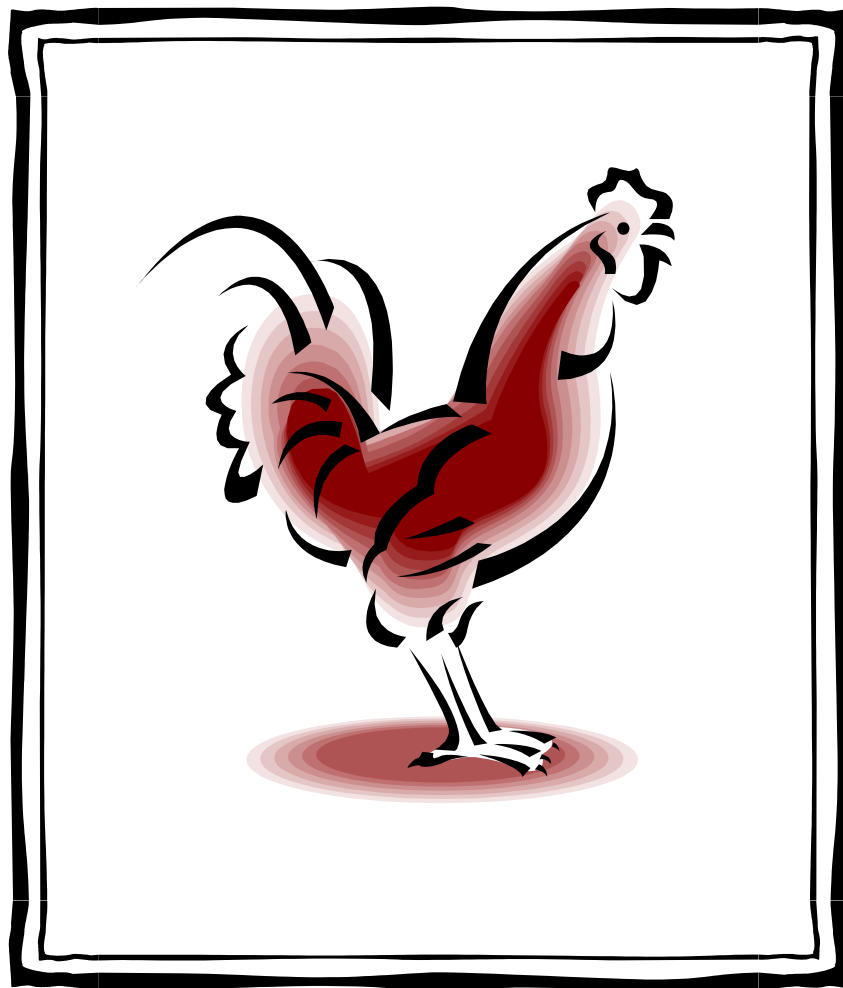
lǎo shǔ

老鼠



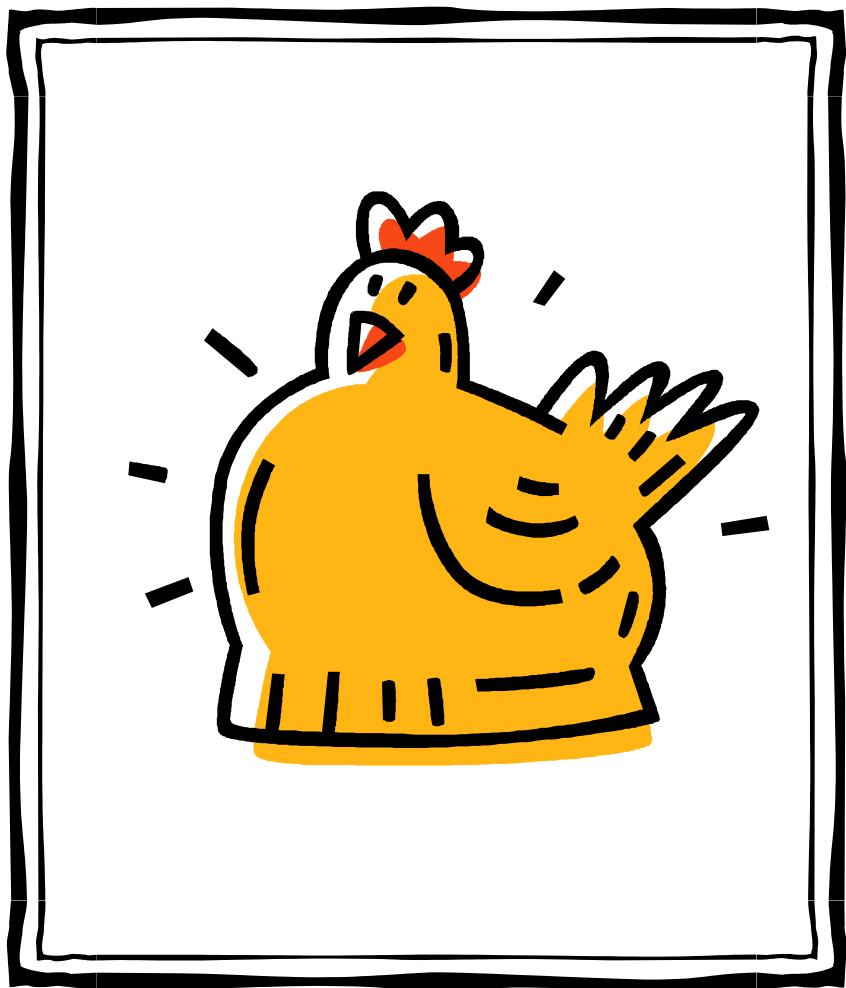
lú

驴



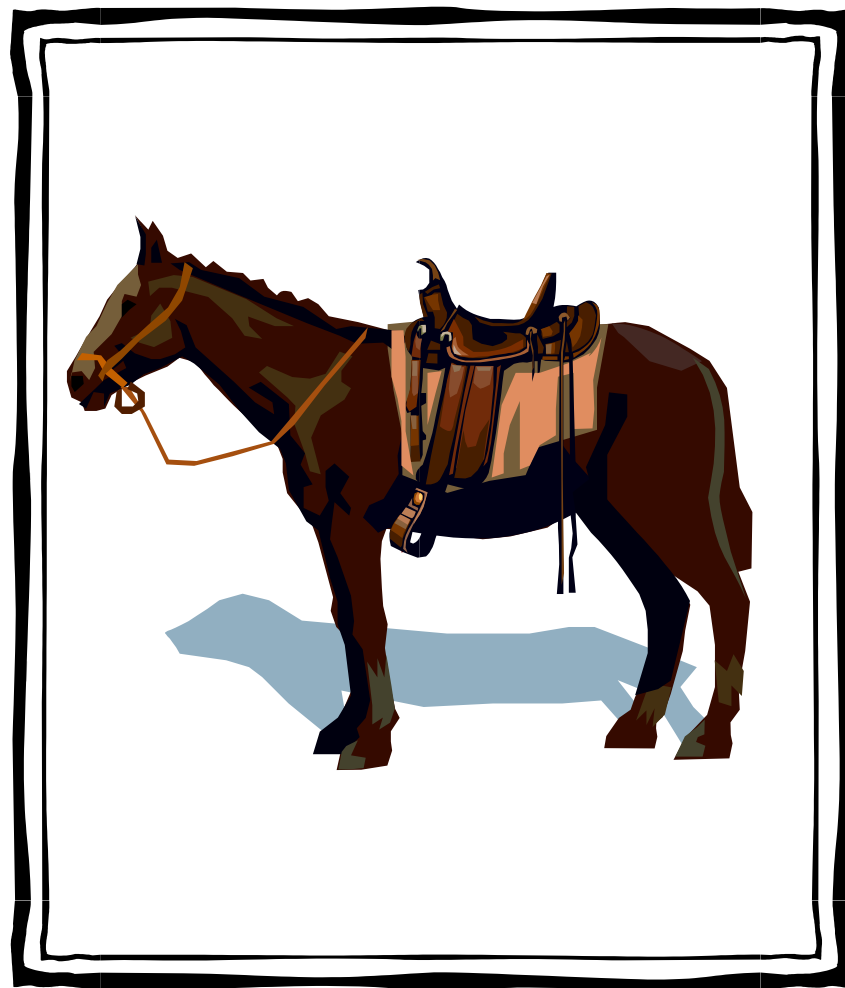
gōng jī

公鸡



mǔ jī

母鸡



mǎ

马